

Milestones PROFESSIONAL

WHAT'S NEW IN MILESTONES PROFESSIONAL 2010?



WHAT'S NEW IN MILESTONES PROFESSIONAL 2010?

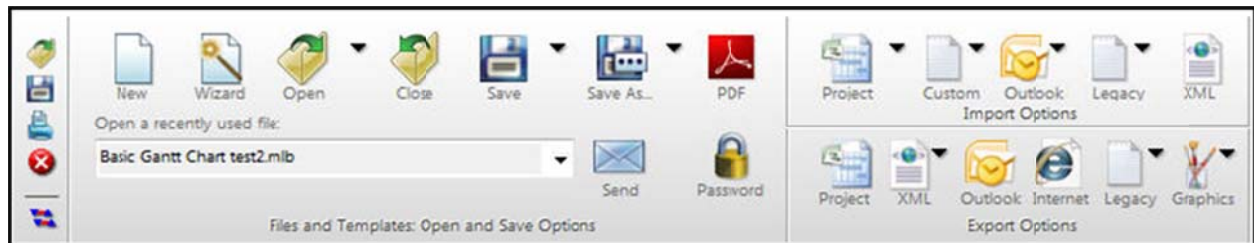
Compatibility



Milestones Professional 2010 is officially fully compatible with Windows 7, the latest operating system from Microsoft. Milestones Professional will also operate with Windows XP and versions of Windows after Windows XP.

Both 64 bit and 32 bit Versions Available. The 64 bit versions can be installed on Windows 7 or Vista 64 or later 64 bit system.

Enhanced Toolbar



Larger Thumbnails make it easy to view files before opening them

When a file is saved using version 2010 a higher resolution thumbnail is included with the file. This results in more detail being available when Extra Large icons are selected using the Explorer and File Open/Save View menu:

Before (Version 2008)

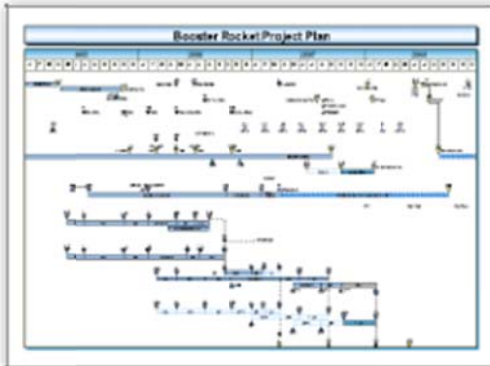


Integrated Master Schedule

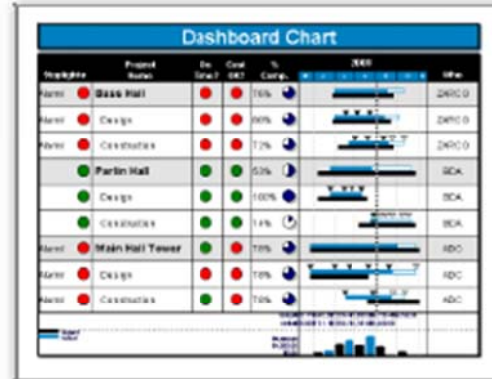


Perfect Project Dashboard

Now (Version 2010)



Integrated Master Schedule



Perfect Project Dashboard

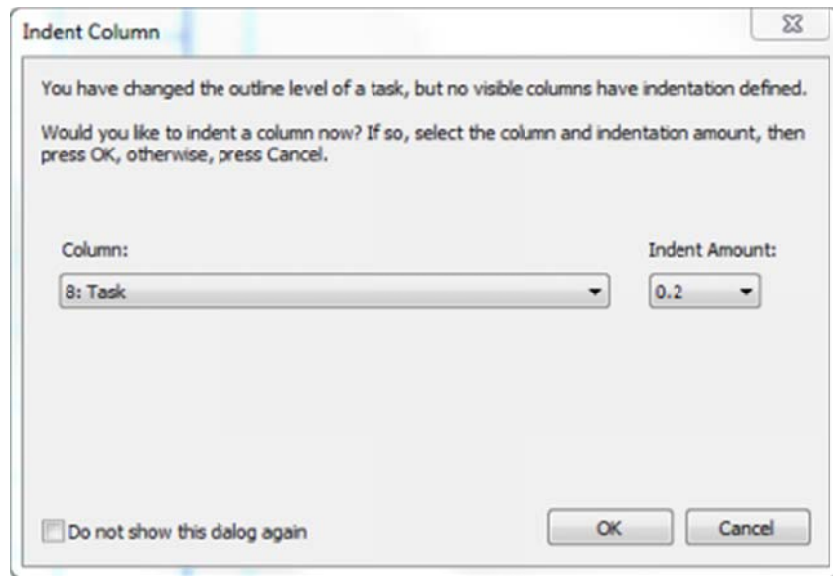
The new default template offers:

- An indented task column.
- Plan and baseline schedule.
- A status date column for showing projects ahead/behind.
- A % complete smartcolumn with a percent indicator.
- A legend to make it easy.

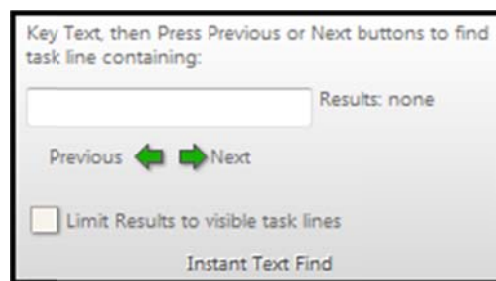
Ease of use Enhancements

Several changes have been made to enhance usability.

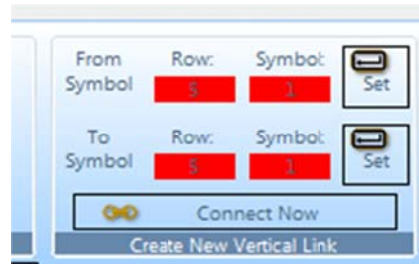
- If a user attempts to indent a task and no indented columns have been set up, Milestones will prompt the user to choose a column to outline.



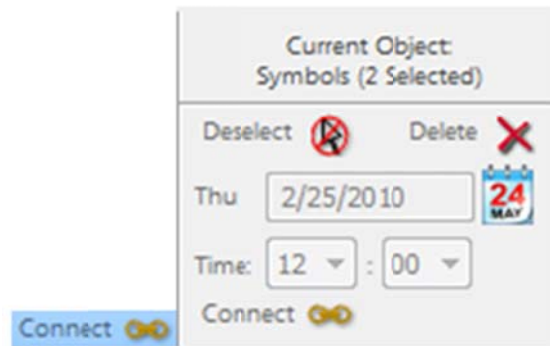
- If a user moves a normal symbol on a row which contains baseline symbols, the user will be offered an opportunity to lock the baseline to prevent baseline dates from shifting.
- It's now possible to right-click to turn off toolbox tooltips.
- Instant text find



- Easily create new vertical links using the toolbar:

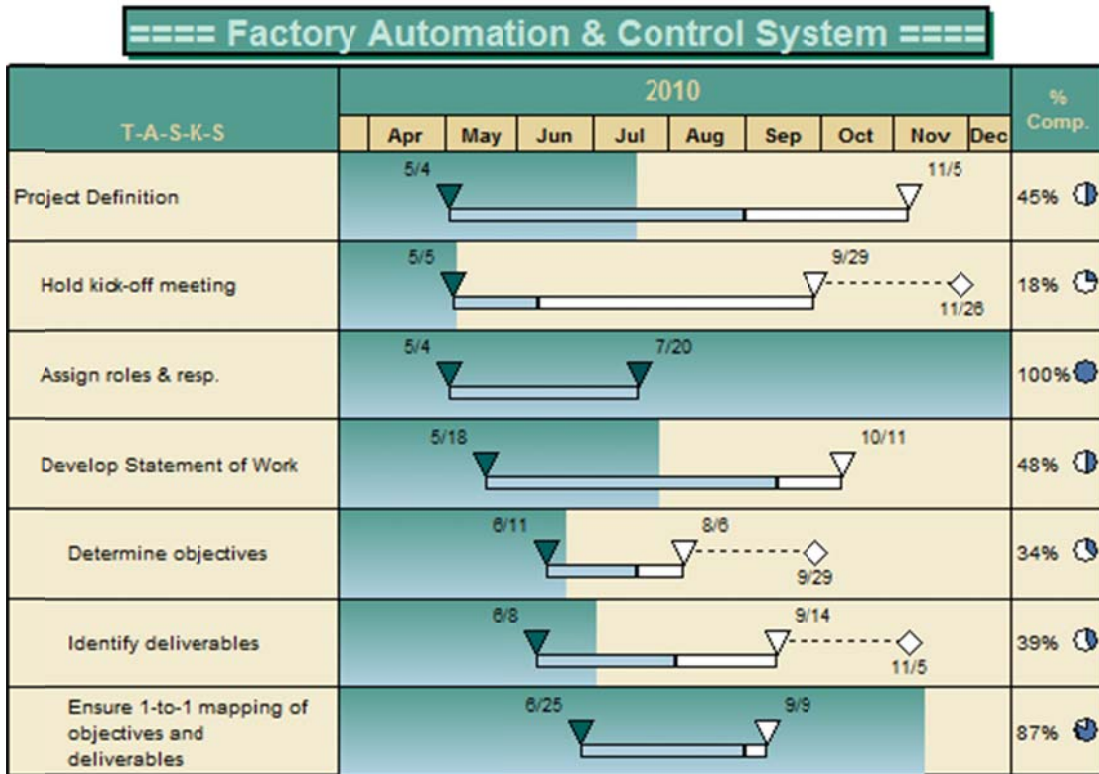


- Add a horizontal connector between two symbols with the connect button:



Percent Complete Shading

This feature fills in the taskline in the schedule area from the left by an amount determined by percent complete. The fill color and gradient fill can be set for this fill area. Its use could be for quick reviews of percent complete. For example a task that is all green in the background could be considered done.

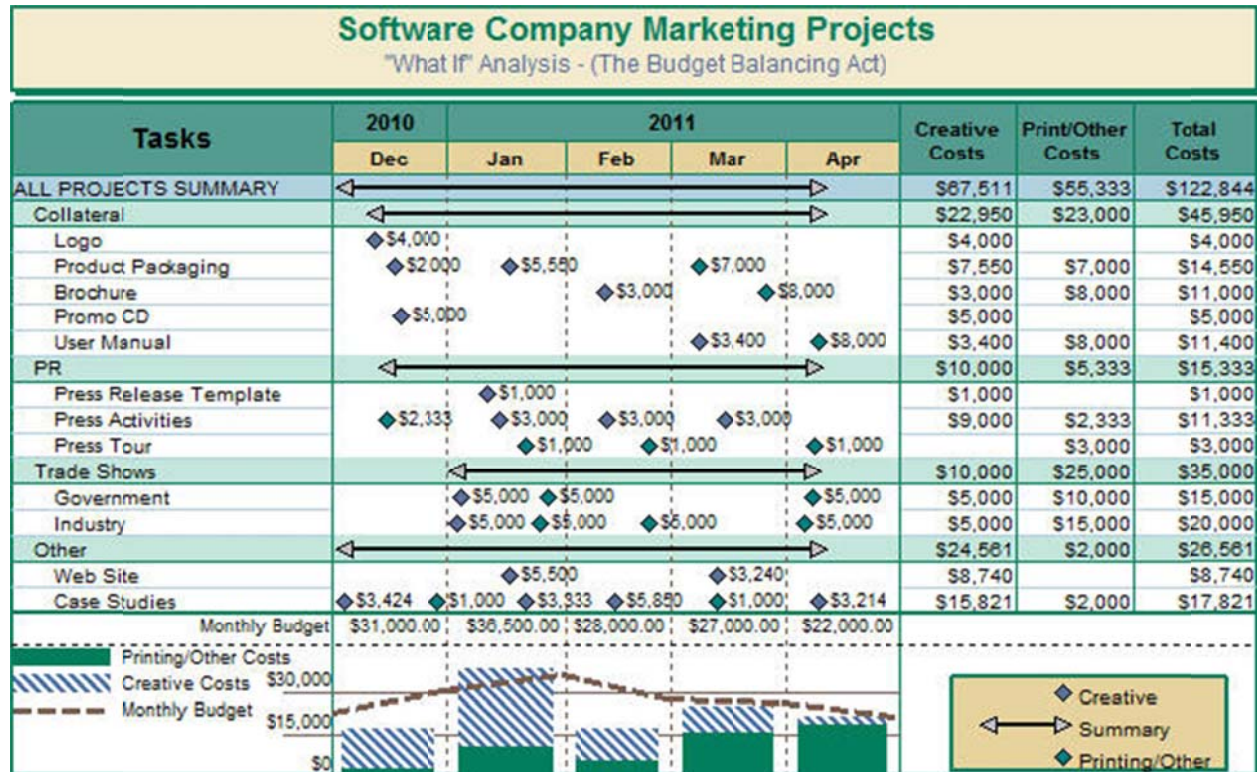


Fade to edge special effect added

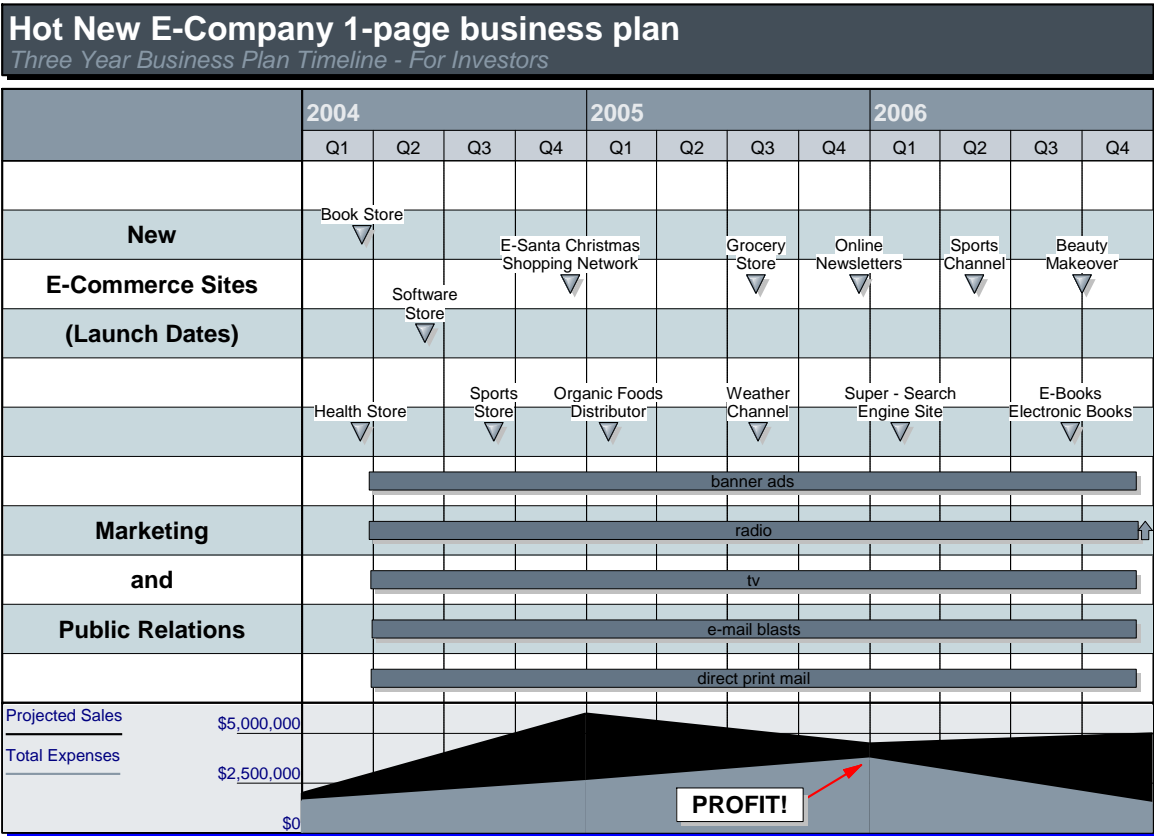
Added "Fade to Edge" gradient fill special effects to Symbol Text boxes and Free-form Text boxes.

DataGraph Overlay and Stacked Bars

With DataGraph overlay you can now have bars and line graphs in one Datagraph, as depicted below. Also, choose to display the bar graphs as stacked bars.



Fill the area under a line graph:



Improved Microsoft Project to Milestones Wizard

Project to Milestones Wizard - Color Theme

Microsoft Project to Milestones Wizard

Choose a Presentation chart type.

1) Pick a category: 2) Choose a specific type:

Page 1 of 1

Stoplight Indicators

Task name	1998	1999	2000	2001	2002	2003	2004	2005	On Budget?	On Schedule?	
PROJECT MANAGEMENT	PROJECT MANAGEMENT								2/14/04	On Budget? ●	On Schedule? ◆
PLANNING	PLANNING								2/18/04	On Budget? ●	On Schedule? ◆
SPACECRAFT ENGINEERING	SPACECRAFT ENGINEERING									On Budget? ●	On Schedule? ◆
COMMAND AND CONTROL	COMMAND AND CONTROL								2/18/04	On Budget? ●	On Schedule? ◆
ATTITUDE CONTROL	ATTITUDE CONTROL								1/11/04	On Budget? ●	On Schedule? ◆
POWER	POWER								4/18/04	On Budget? ●	On Schedule? ◆
THERMAL	THERMAL									On Budget? ●	On Schedule? ◆
ORBIT ADJUST PROPULSION	ORBIT ADJUST PROPULSION									On Budget? ●	On Schedule? ◆

▶ Summary █ Baseline ● On Budget ▼ Complete
▶ Start / Finish █ Baseline Summary ● Below Budget ◆ On Schedule
█ Critical ▼ Over Budget ◆ Late

Cancel | << < Back Next > Finish

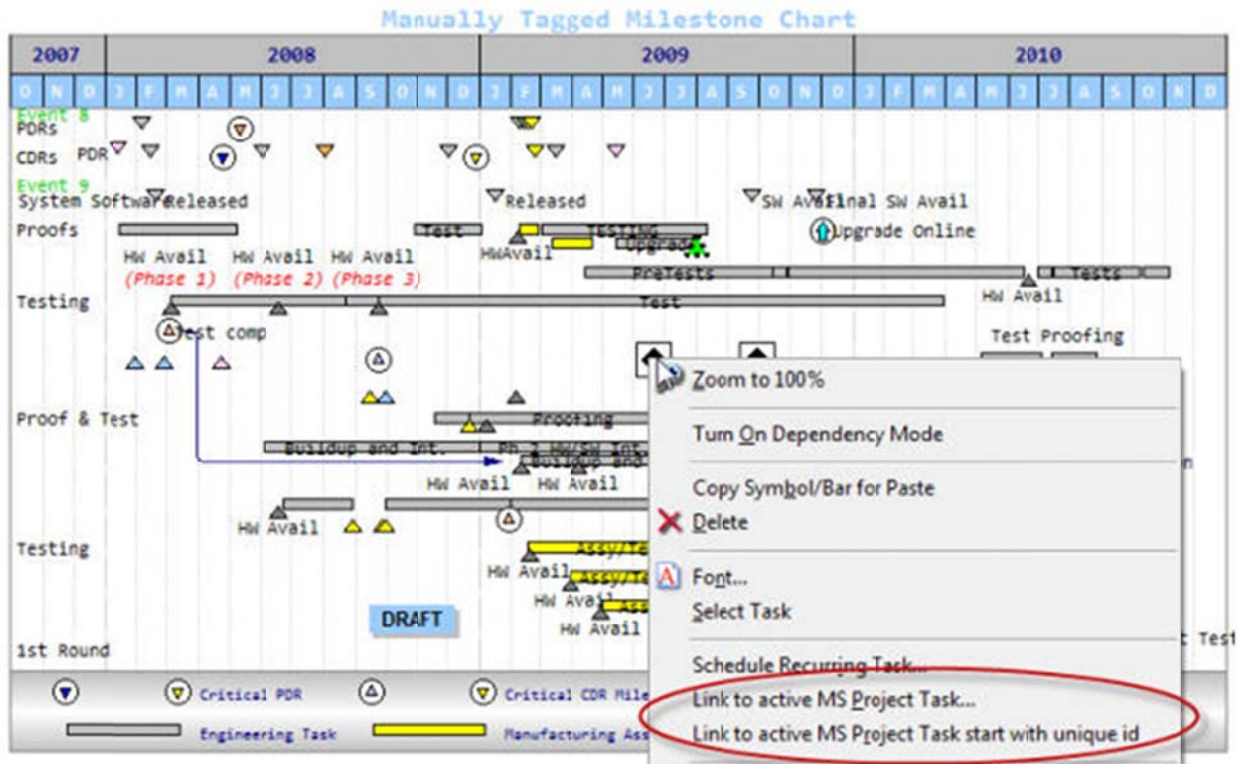
5/14/07

August

Next > Finish

Link a symbol to Microsoft Project using the right-click menu

Now manually tagging a milestone chart is even easier using the **Link to active MS Project Task** feature.



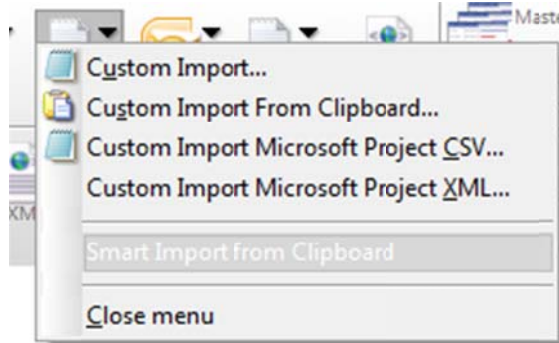
Tag Symbol

Date Field	Start
ID for tag	Unique ID

Cancel Tag

Smart import from Clipboard for easier importing from SharePoint and other sources

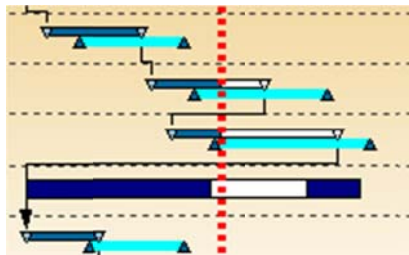
On the File tab, Import section, a new **Smart Import from Clipboard** has been added. The purpose of this import option is to make it easier to import tab delimited files from the clipboard. An example use of this feature would be to create templates which match the task list headings in a SharePoint task list, and then use the copy tasklist to clipboard feature in SharePoint to easily import the task list into Milestones.



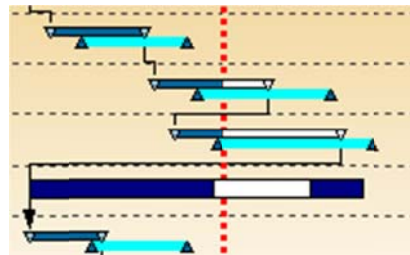
Current date line display

It is possible to show the current date line (red line below) behind the symbols and bars. By default, the date line is shown in front of the symbols and bars.

(DEFAULT – ON TOP)

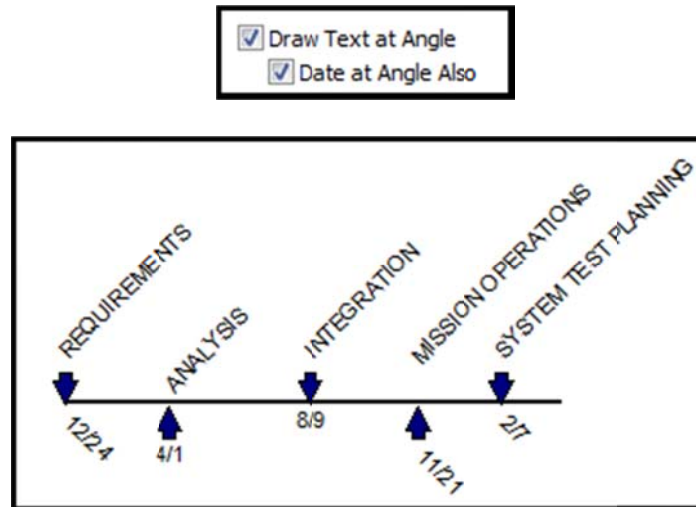


(NEW – BEHIND)



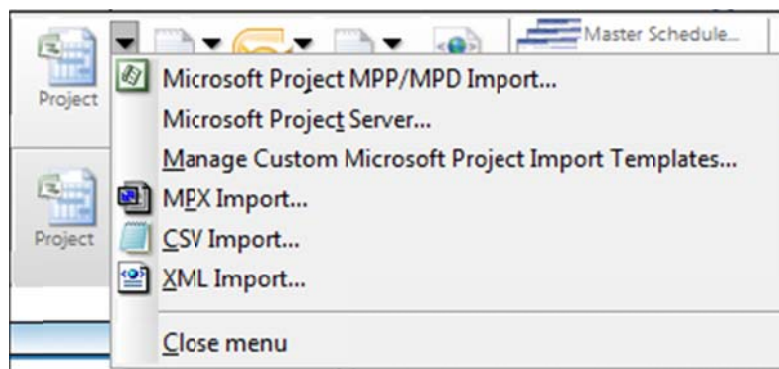
Symbol Date at an Angle

If the symbol text is shown at an angle, it's also possible to show the symbol date at an angle. Note that this is accomplished on a symbol-by-symbol basis.



Import XML

You can now import Microsoft Project format XML files. This makes it possible to import data created by Primavera P6 and other applications that can save their data in the format described by the Microsoft Project XML schema.



Now, 3 options for Status Line Height

- Display Status Line.** (with no additional options checked)



- Three Times Symbol Height** to increase the height of the status line by three symbol sizes



- Row Height** to increase the height of the status line to be equal to the row height.



More:

- There are new symbol types.
- The symbol fill color override also overrides the after status fill color.
- The symbol text can be hidden on rolled-up symbols.
- The floating legend can now be limited to just specific pages.
- It's now possible to filter by symbol date and symbol type.
- Add a hyperlink to any picture added to a schedule.
- Custom Import dialog now includes " Import Filter" and "Export Filter" buttons.